



ACCT Reforestation Project Model

www.communitycarbontrees.org

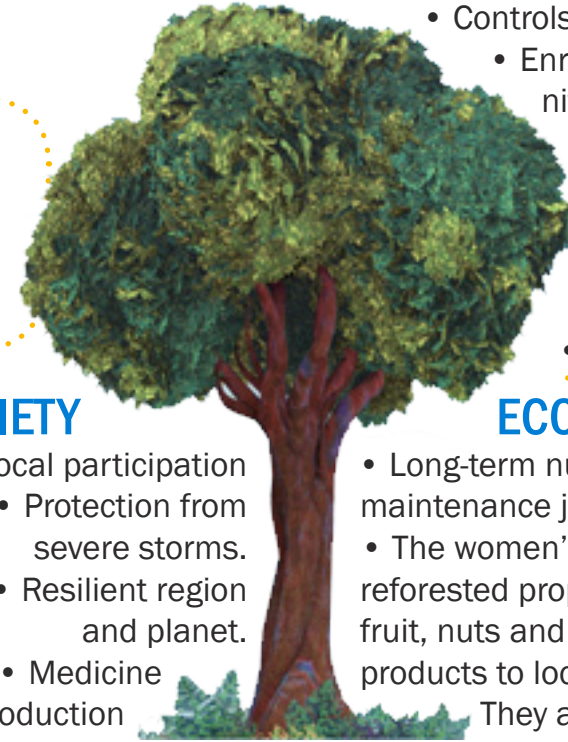
SEEDS

Are collected year-round by hand and sprouted in two tree nurseries producing 100 different species of rainforest trees.



YOUNG TREES

are planted on degraded farmland owned by local farmers. The sites are strategically designed in a natural forest matrix.



ENVIRONMENT

- Solves global warming.
- Creates biological corridors with food & homes for animals and birds.
- Protects water sources and rivers.
- Controls Erosion.
- Enriches soil with nitrogen and other minerals.
- Purifies air.
- Increases water recycling and humidity control.
- Produces oxygen

PAID CREWS

maintain the young rainforest trees for four years. There are at least three supervised visits each year for maintenance and cleaning.

LOCAL FARMERS

In place of practices that destroy trees, local farmers are paid to plant trees.

SOCIETY

- Local participation
 - Protection from severe storms.
 - Resilient region and planet.
 - Medicine Production
- Sustainability & Reforestation Education
- Clean air and water.

ECONOMY

- Long-term nursery, planting and maintenance jobs.
- The women's group, with reforested property, take tree fruit, nuts and homemade forest products to local farmer's market. They are also paid to prepare nursery soil.
- Microbusinesses are created.
- Development of community owned ecotourism projects

LONG TERM

Costa Rican families become leaders in reforestation, receiving instruction on maintenance for 21

31
local
family
Farms
Reforested

1 biodiverse
tropical tree
x 25 years =

1 TON
of carbon

\$25
to offset
1 ton
of carbon

Since
2010,
12,640
trees planted on local
Costa Rican farms.

Private reforestation
Projects In Costa
Rica

544,000
trees

growing strong since
2002